

GRDC staff, Southern Panel and
Regional Cropping Solutions Network
members invite you to



GRDC LOCAL FORUM - LALBERT

Friday 22nd June

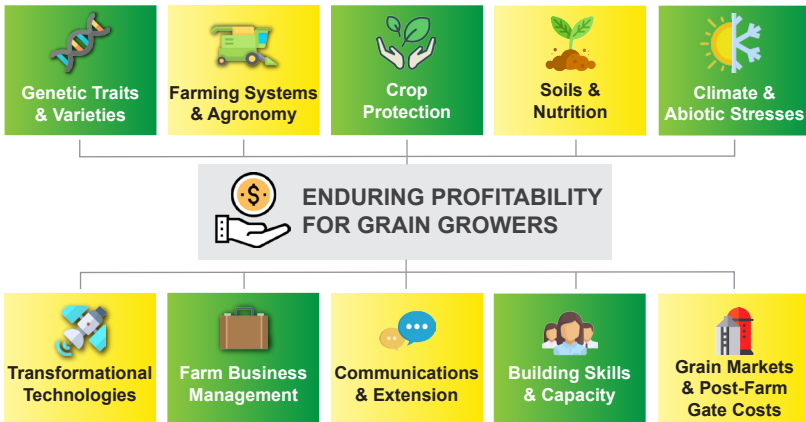
9.00am - 12.30pm *(followed by lunch)*

Lalbert Football & Netball Clubroom

Be informed and discuss GRDC investment in
R,D & E on behalf of grain growers.



Have your say on the important constraints and opportunities
for the profitability of grain growers.



Learn and talk about the latest knowledge and R, D & E activities for:

**Understanding any Potential Risk of Herbicide
Carryover in Soils and Potential Implications for the
Emergence and Productivity of Subsequent Crops
with Dr. Mick Rose (NSW DPI)**

Please RSVP for catering purposes -

Jen Lillecrapp on 0427 647 461 or jen@brackenlea.com
or via our website:

www.regionalcroppingsolutions.com.au